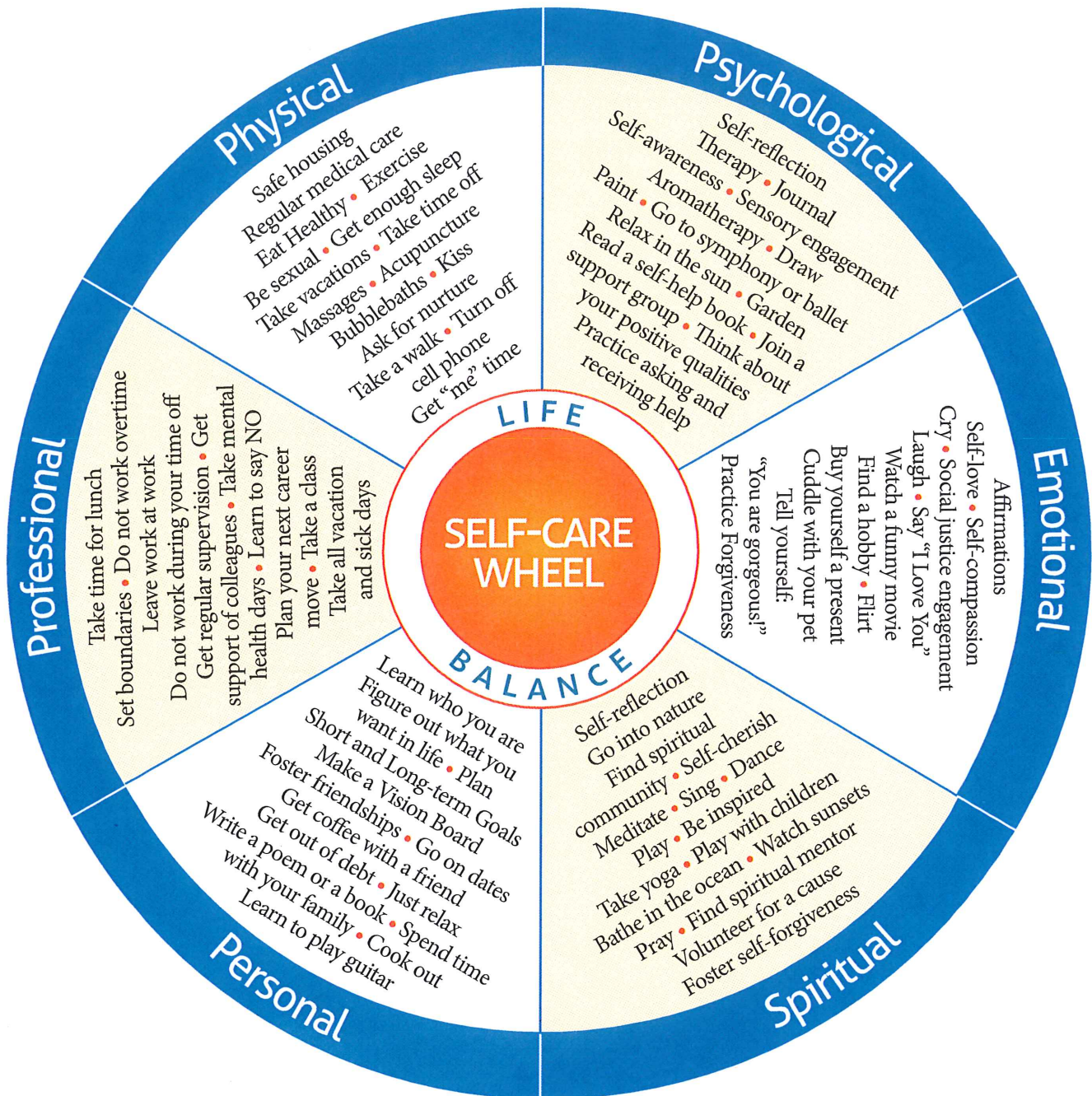


SELF-CARE WHEEL



This Self-Care Wheel was inspired by and adapted from "Self-Care Assessment Worksheet" from *Transforming the Pain: A Workbook on Vicarious Traumatization* by Saakvitne, Pearlman & Staff of TSI/CAAP (Norton, 1996). Created by Olga Phoenix Project: Healing for Social Change (2013).

Dedicated to all trauma professionals worldwide.

www.OlgaPhoenix.com

Self-Care Assessment

Adapted from Saakvitne, Pearlman, & Staff of TSI/CAAP (1996). *Transforming the pain: A workbook on vicarious traumatization*. Norton.

The following worksheet for assessing self-care is not exhaustive, merely suggestive. Feel free to add areas of self-care that are relevant for you and rate yourself on how often and how well you are taking care of yourself these days.

When you are finished, look for patterns in your responses. Are you more active in some areas of self-care but ignore others? Are there items on the list that make you think, "I would never do that"? Listen to your inner responses, your internal dialogue about self-care and making yourself a priority. Take particular note of anything you would like to include more in your life.

Rate the following areas according to how well you think you are doing:

- 3 = I do this well (e.g., frequently)
- 2 = I do this OK (e.g., occasionally)
- 1 = I barely or rarely do this
- 0 = I never do this
- ? = This never occurred to me

Physical Self-Care

- ___ Eat regularly (e.g. breakfast, lunch, and dinner)
- ___ Eat healthily
- ___ Exercise
- ___ Get regular medical care for prevention
- ___ Get medical care when needed
- ___ Take time off when sick
- ___ Get massages
- ___ Dance, swim, walk, run, play sports, sing, or do some other fun physical activity
- ___ Take time to be sexual - with myself, with a partner
- ___ Get enough sleep
- ___ Wear clothes I like
- ___ Take vacations
- ___ Other:

Psychological Self-Care

- ___ Take day trips or mini-vacations
- ___ Make time away from telephones, email, and the Internet
- ___ Make time for self-reflection
- ___ Notice my inner experience - listen to my thoughts, beliefs, attitudes, feelings
- ___ Have my own personal psychotherapy
- ___ Write in a journal
- ___ Read literature that is unrelated to work
- ___ Do something at which I am not expert or in charge
- ___ Attend to minimizing stress in my life
- ___ Engage my intelligence in a new area, e.g., go to an art show, sports event, theatre
- ___ Be curious

- _____ Say no to extra responsibilities sometimes
- _____ Other:

Emotional Self-Care

- _____ Spend time with others whose company I enjoy
- _____ Stay in contact with important people in my life
- _____ Give myself affirmations, praise myself
- _____ Love myself
- _____ Re-read favorite books, re-view favorite movies
- _____ Identify comforting activities, objects, people, places and seek them out
- _____ Allow myself to cry
- _____ Find things that make me laugh
- _____ Express my outrage in social action, letters, donations, marches, protests
- _____ Other:

Spiritual Self-Care

- _____ Make time for reflection
- _____ Spend time in nature
- _____ Find a spiritual connection or community
- _____ Be open to inspiration
- _____ Cherish my optimism and hope
- _____ Be aware of non-material aspects of life
- _____ Try at times not to be in charge or the expert
- _____ Be open to not knowing
- _____ Identify what is meaningful to me and notice its place in my life
- _____ Meditate
- _____ Pray
- _____ Sing
- _____ Have experiences of awe
- _____ Contribute to causes in which I believe
- _____ Read inspirational literature or listen to inspirational talks, music
- _____ Other:

Relationship Self-Care

- _____ Schedule regular dates with my partner or spouse
- _____ Schedule regular activities with my children
- _____ Make time to see friends
- _____ Call, check on, or see my relatives
- _____ Spend time with my companion animals
- _____ Stay in contact with faraway friends
- _____ Make time to reply to personal emails and letters; send holiday cards
- _____ Allow others to do things for me
- _____ Enlarge my social circle
- _____ Ask for help when I need it
- _____ Share a fear, hope, or secret with someone I trust
- _____ Other:

Workplace or Professional Self-Care

- _____ Take a break during the workday (e.g., lunch)
- _____ Take time to chat with co-workers
- _____ Make quiet time to complete tasks
- _____ Identify projects or tasks that are exciting and rewarding
- _____ Set limits with clients and colleagues
- _____ Balance my caseload so that no one day or part of a day is "too much"
- _____ Arrange work space so it is comfortable and comforting
- _____ Get regular supervision or consultation
- _____ Negotiate for my needs (benefits, pay raise)
- _____ Have a peer support group
- _____ (If relevant) Develop a non-trauma area of professional interest

Overall Balance

- _____ Strive for balance within my work-life and work day
- _____ Strive for balance among work, family, relationships, play, and rest

Other Areas of Self-Care that are Relevant to You

- _____
- _____
- _____

(Retrieved 8/6/2010 from
http://www.ballarat.edu.au/aasp/student/sds/self_care_assess.shtml and adapted by Lisa D.
Butler, Ph.D.)